



Integrating research and experiential learning into residency training through the All of US Research Program



All of Us is a service mark of the U.S. Department of Health and Human Services.



1



Northern Colorado All of Us Research Program Team



Dr. Michael Bradfield
Regional Medical Director *All of Us*
Faculty Physician at
North Colorado Family Medicine



Michael Risse, MPH
Clinical Research
Coordinator *All of Us*



Kim Arnett
Research Assistant
All of Us




Daniel Marin
Research Assistant
All of Us



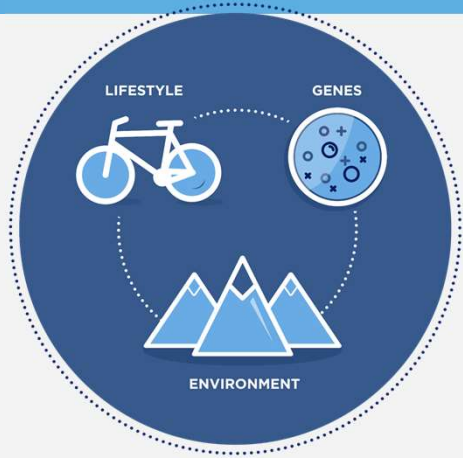
All of Us is a service mark of the U.S. Department of Health and Human Services.

2



The Precision Medicine Initiative

<https://www.joinallofus.org/en/videos/all-us-anthem>



Banner Health

All of Us is a service mark of the U.S. Department of Health and Human Services.

3



A Transformational Approach to Diversity

Reflecting the country's rich diversity to produce meaningful health outcomes for communities historically underrepresented in biomedical research.



People

Health Status


Geography

Data Types

Banner Health


All of Us is a service mark of the U.S. Department of Health and Human Services.


4




A Growing Network of Partners

- National Partners
- Regional Medical Centers
- FQHCs
- Community Partners








All of Us is a service mark of the U.S. Department of Health and Human Services.

5




Major Updates

Participant Enrollment Updates

Program Milestones

- >268,062 core participants enrolled
- 397 launched of 452 total sites planned
- 81.33% underrepresented in biomedical research
- 52.08% racial or ethnic diversity





Colorado has enrolled 348 core participants in 35 weeks

Arizona has enrolled >34,242 core participants

Pittsburgh has enrolled >13,800 core participants

TACH, New York, and California have each enrolled >20,000 core participants





All of Us is a service mark of the U.S. Department of Health and Human Services.

6

3

All of Us

Kinds of Research Activities Participants Are Invited To Do...



1. Enroll & Consent
2. Surveys
3. Baseline Measurements
4. Bio-Samples
5. Apps, Phones & Wearables

 Banner Health

All of Us is a service mark of the U.S. Department of Health and Human Services.

7

All of Us

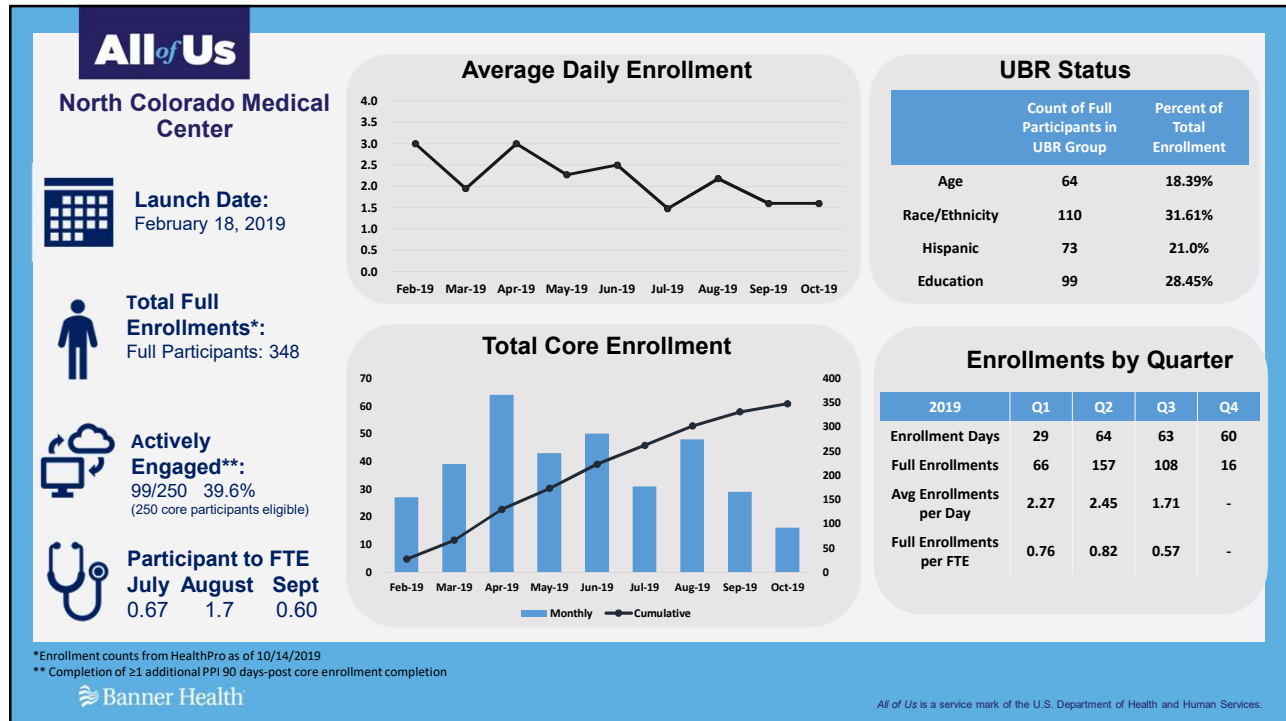
Local Northern Colorado Updates



 Banner Health

All of Us is a service mark of the U.S. Department of Health and Human Services.

8



9

All of Us

How to get involved:

- Visit our website for more information:
www.JoinAllOfUs.org/noco
- Visit our physical location:
Banner Health North Colorado Medical Center
1801 16th Street Greeley, CO 80631
3rd Floor North C Wing (Room C3-228)
Park Near Entrance #5
- Give us a call:
970-810-3590

- Download the *All of Us* app for your smart phone
- Future Plans: Branch out into McKee Medical Center, Banner Fort Collins Medical Center, Northern Colorado Communities, publish data with an internship program at NCMC

All of Us is a service mark of the U.S. Department of Health and Human Services.

10

All of Us

As we collect more data about lifestyle, overall health, biology in Northern Colorado, along with having a biobank of blood and urine samples, plus electronic health records which are updated every 3-4 months:

Researchers from around the world can go through a formal process of requesting access to all of our information.

Researchers can filter data by many ways to pinpoint the exact data they want, for example all female participants who live in Weld County with a BMI of over 30 who are non-smokers who have a family history of heart disease and have been on a certain medication- that data is easily accessible.

All of Us Research staff will contact the participants to see if they would consider enrolling into future clinical research.

11

All of Us

Additional Retention Opportunities: Surveys

Module	Status
The Basics	Complete
Overall Health	Complete
Lifestyle	Complete
Family History	Complete
Healthcare Access and Utilization	Complete
Personal Medical History	Complete
Medications	PTSC Assessment
Diet	Module Setup
Physical Activity	PPIC Review
Social Determinants of Health	Module Setup
Environmental Exposure and Occupational Health	Module Setup
Mental Health and Substance Abuse	Module Setup
Disability	Task Force Formation

12

All of Us

Summary

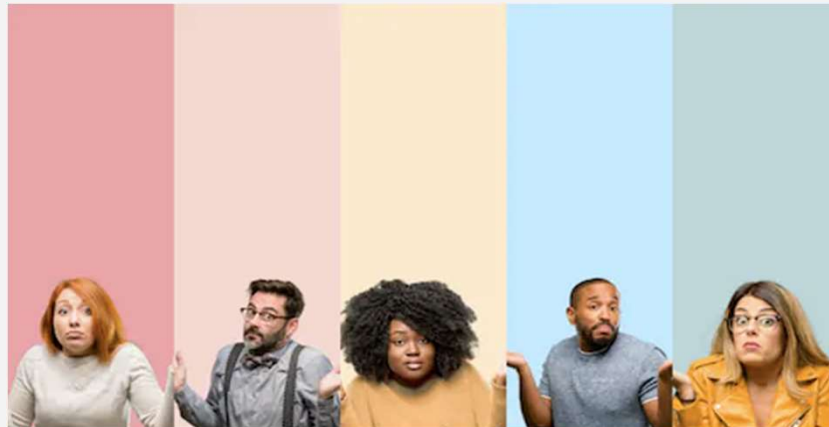
Through the *All of Us* Research Program, we aim to generate:

- **A new model of research** based on collaboration among researchers, providers, and participants
- **A rich resource of data**, including biospecimens, to help accelerate research advances
- **Increased knowledge** leading to individualized care and improved health for future generations

13

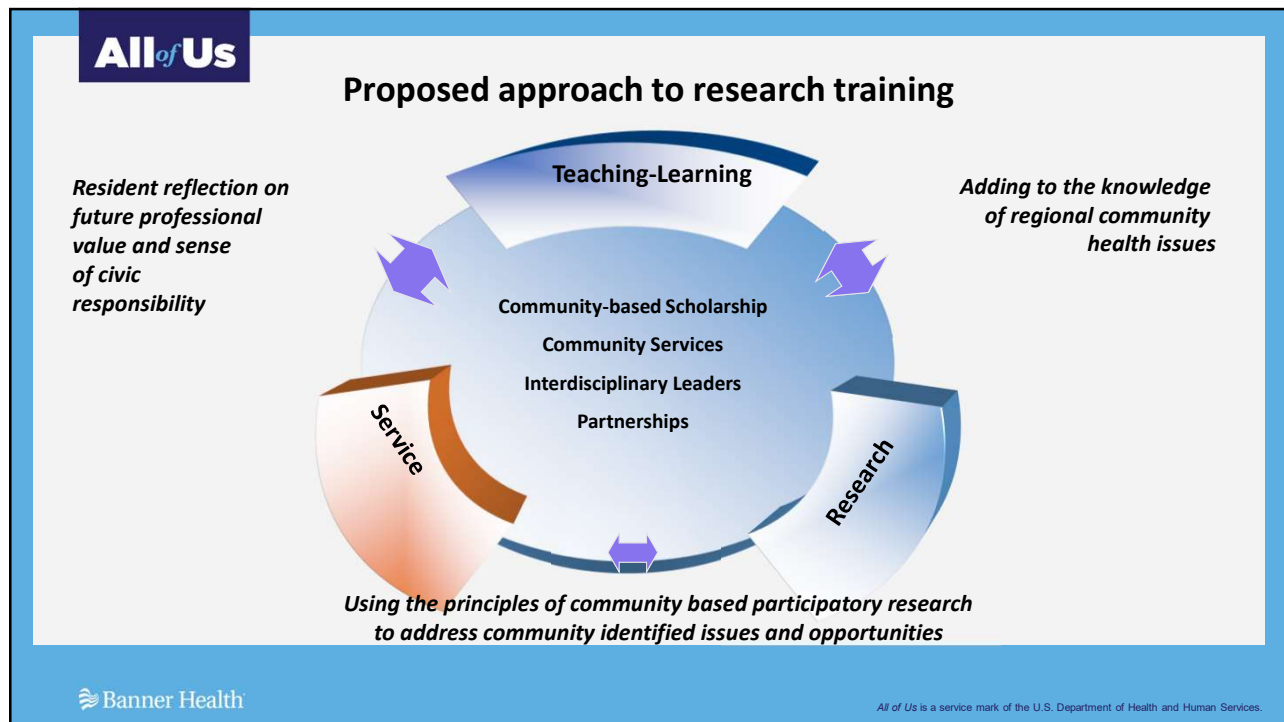
All of Us

How could this affect resident training in CO???



shutterstock.com • 1091168951

14



15



16



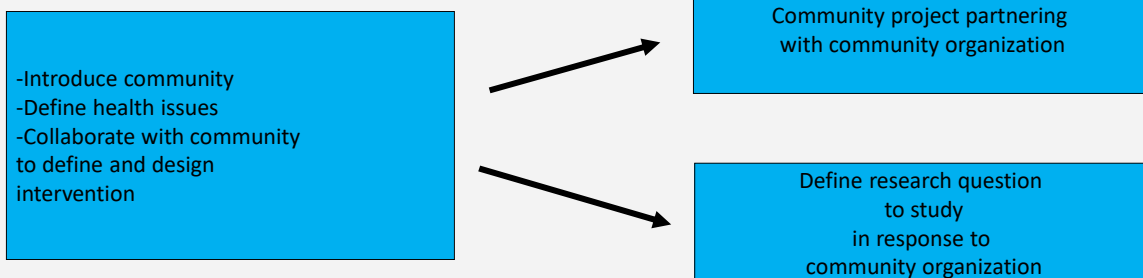
Interdisciplinary Leaders- Skills Our Residents Need

- Ability to work as a member of a team and to be able to differentiate levels/ roles of each team member
- Tools to be a leader and practice health advocacy
- Ability to identify and assess health care needs of a community applying multiple community health assessment methods
- Skills to plan care for a population (town, state, clinic, or even family)
- Confidence to direct healthcare as part of a team that represents those underserved in the community and in biomedical research

17



Community-Based Scholarship and Service



18

All of Us

- **Inputs**
 - Institutional mission, educational partnerships, selection of students and the experience of faculty and community partners influence the educational process
- **Through-puts**
 - How and where family medicine residents are trained and the curriculum offered influence choices of location of practice as well as cultural competency and community leadership
- **Outputs**
 - Today's graduates of medical and health professions education will influence key outcomes planned for reform/ revisions to health care system: access, cost and quality

What makes CAMFR graduates different?

19

All of Us

Mentors


“Tell me and I forget, teach me and I may remember, involve me and I learn.”

-Benjamin Franklin

20

All of Us

Questions?



The collage features a central orange square with the text "The future of health begins with you". Surrounding this are portraits of diverse individuals of various ages and ethnicities. In the bottom left of the collage is the "All of Us RESEARCH PROGRAM" logo.

All of Us
RESEARCH PROGRAM

Banner Health

All of Us is a service mark of the U.S. Department of Health and Human Services.